



UT100

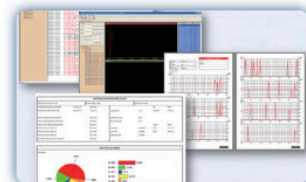
Handheld Pulse Oximeter

The UT100 HandHeld Pulse Oximeter puts pulse oximetry technology in the palm of your hand. Designed to provide fast, reliable SpO2 and pulse rate measurements. It is a portable device for spot-checking, record or continuous monitoring of adult, pediatric or neonate patients. It can be used in the hospital, clinical environment, homecare, and during emergency land transportation.

- 2.8" high resolution color display, two display directions.
- Turn off automatically for power saving.
- Two types of power supply: AC charge or 4 AA batteries.
- Three measurement modes: spot-check , record and monitoring.
- 3-level visual and audio alarms with adjustable alarm ranges.
- Continuous stores data for 999 patient files in 120 hours.
- Data can be stored on a computer and managed, analyzed and printed by using the ODMS system.
- Silent sleep monitoring, with data storage and automatic power-saving features for patients with 24 uninterrupted care.
- Suitable for adults, pediatric and neonate patient.



Horizontal display mode with three selecting working modes.



ODMS System, functional data analysis software.



Support free customization of multiple languages.

המסטרדן | אספקת ציוד רפואי
 ת.ד. 7789 רמת גן 5217701 oded@hamsterdan.co.il www.hamsterdan.co.il
 נייד: 050-923 5353 טל': 073-796 2030 073-796 2070 :079



SPECIFICATIONS

Enclosure

Weight	258g (0.569lb), including four batteries
Dimensions	75mm W x 135 mm H x 28 mm D (2.95 in. W x 5.31 in. H x 1.10 in. D)
Display	
Screen size	71.1 mm (2.8 in.), measured diagonally
Screen type	TFT LCD, white LED backlight, viewing cone of 60° and optimal viewing distance of 1 meter
Resolution	240 x 320 pixels
Alarms	
Categories	Patient status and system status
Priorities	Low, medium, and high
Notification	Audible and visual
Setting	Full storage, low battery and sensor off
Alarm volume level	45 to 85 decibels
Alarm system delay	<10seconds

SpO2

Aturation range	1% to 100%
Accuracy	70–100% ($\pm 2\%$), <70% undefined
Resolution	1%
Display sweep speed	10.00 mm/sec

Pulse Rate

Aturation range	25bpm to 250bpm
Accuracy	$\pm 2\text{bpm}/\pm 2\%$ take maximum
Resolution	1bpm

Electrical

Battery	Four new Ni–Mh batteries with 4,800mAh will typically provide 20 hours of monitoring with no external communication, no audible alarm sound, and at an ambient temperature of 25°C
Type	Alkaline/Ni–Mh Batteries, IEC: LR6
Voltage	1.5 V x4 for Alkaline Batteries, 1.2V x4 for Ni–Mh Batteries

Environmental

	Transport and Storage	Operating Conditions
Temperature	–20°C to 60°C (–4°F to 140°F)	0°C to 45°C (32°F to 113°F)
Altitude	–500 to 5,000m (–1,640 to 16,404 ft.)	
Relative humidity	15% to 95% noncondensing	

Trend

	Tabular
Memory	Saves a total of 120 hours of data events; saves date and time, alarm conditions, pulse rate, and SpO ₂ measurements
Tabular format	One table for all parameters

Configuration

Standard	Adult finger clip SpO ₂ sensor, Hanging Strip
Optional	Neonate SpO ₂ sensor, Pediatric SpO ₂ sensor, Various SpO ₂ sensors (ear clip, disposable, silicone soft tip, etc), AC adapter, Alkaline/Ni–Mh Batteries, Protective Cover, Data Analysis Software

ACCESSORIES


 Disposable SpO₂ sensor

 Neonate SpO₂ sensor


Protective cover


 Pediatric SpO₂ sensor

 Silicone soft SpO₂ sensor


AC Adapter

